

# Ocean View



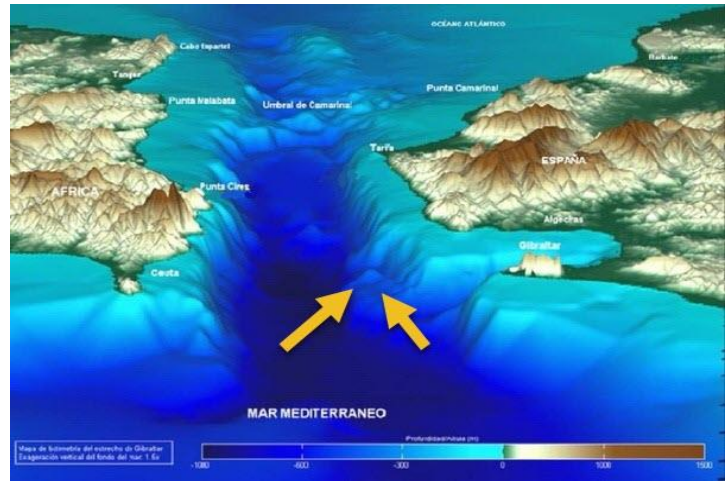
OK first a little clarification. The three pictures above (2 super-imposed on the third) are NOT **an** “Ocean View”. They are **OF** a place called “Ocean View”. The background is a poorly done (but the best they had) Google Map 360 frame panoramic view of the Straights of Gibraltar, part way between the Atlantic Ocean and the Mediterranean Sea. The picture is taken from a tourist location called “**The Pillars of Hercules**”. This tourist location is part way up the Rock of Gibraltar and is therefore on the southern side of the North Pillar. The South Pillar is that mountain top across the Strait, about in the middle of the panoramic view. (Just above the high-rise building back right corner. That corner marks almost exactly the “Ocean View” location.)

The two pictures that are super-imposed are pictures that I took when I was there, after I became aware of “Ocean View”, but at the point unnamed. My two pictures were not taken at the “Pillars of Hercules” location, but at a roadside rest stop part way up. Obviously things have changed considerably since I was there in the mid-seventies. Altitude wise, when I was there, the roadside spot (London / New York distance markers) were about where that big hi-rise building is now. The picture on the left shows that South Pillar across the Strait a little left of center, but obviously by appearance, closer than the one taken for Google Maps. The Southern Pillar is left of center because lined up, it was behind some trees and bushes. Which you can see in the picture on the right. In that picture the Southern Pillar is behind the London / New York distance arrows and of course the tree and bushes. BUT, it was that picture that aligns the North and South Pillars and the location of what was later named “Ocean View”. Finally, the South Pillar is actually a mountain called “Jebel Musa” and it is in the country of Morocco, Africa. About halfway between the cities of Eddallya and Ceuta (and Ceuta actually belongs to Spain), both of which are no where near the size of Tangier.

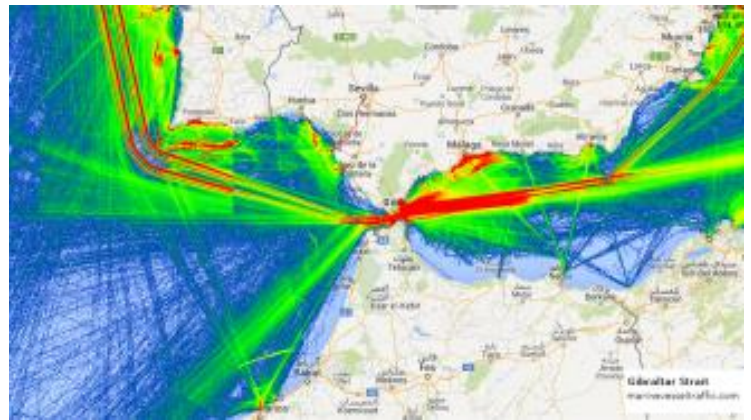
With that all explained, “Ocean View” was a particular sub surface sea mount that was distinguishable within our operational depth range. It is as explained halfway between the Pillars of Hercules, and it marks a location that begins an almost straight-line exit course to the Atlantic and the west. As boat sailors we would all long for the day when we would put “Ocean View” astern of us for good.



# THE DETAILS



On the left, I use the Google Maps view to place a North / South double pointed arrow to show the alignment covered on page 1. Google Maps makes all the less than 100-fathom terrain one color. Note the arrows I have placed to show “Ocean View”, which is distinct and below the 100-fathom curve. Then above, that picture shows it in relative sub surface terrain.



Ocean View to us was a distinguishable point of reference that provided us with an easily identifiable point keeping us as “clean” as possible when all things were considered. The outward bound (Atlantic) traffic would primarily be to the north of us, and the inbound traffic (Mediterranean) would be south of us as long as we stayed mindful of where we were relative to “Ocean View”.

As I talked about in “Ocean ViewS” we were always focused on our Exit from the Med and setting the course for home. Shown here below using the last two pictures as reference, can you see why.

Course direction = Black Arrows. Run Silent, Run Deep (enough) – in the 3<sup>rd</sup> Dimension.

