

# 50,000 Leagues Under The Sea

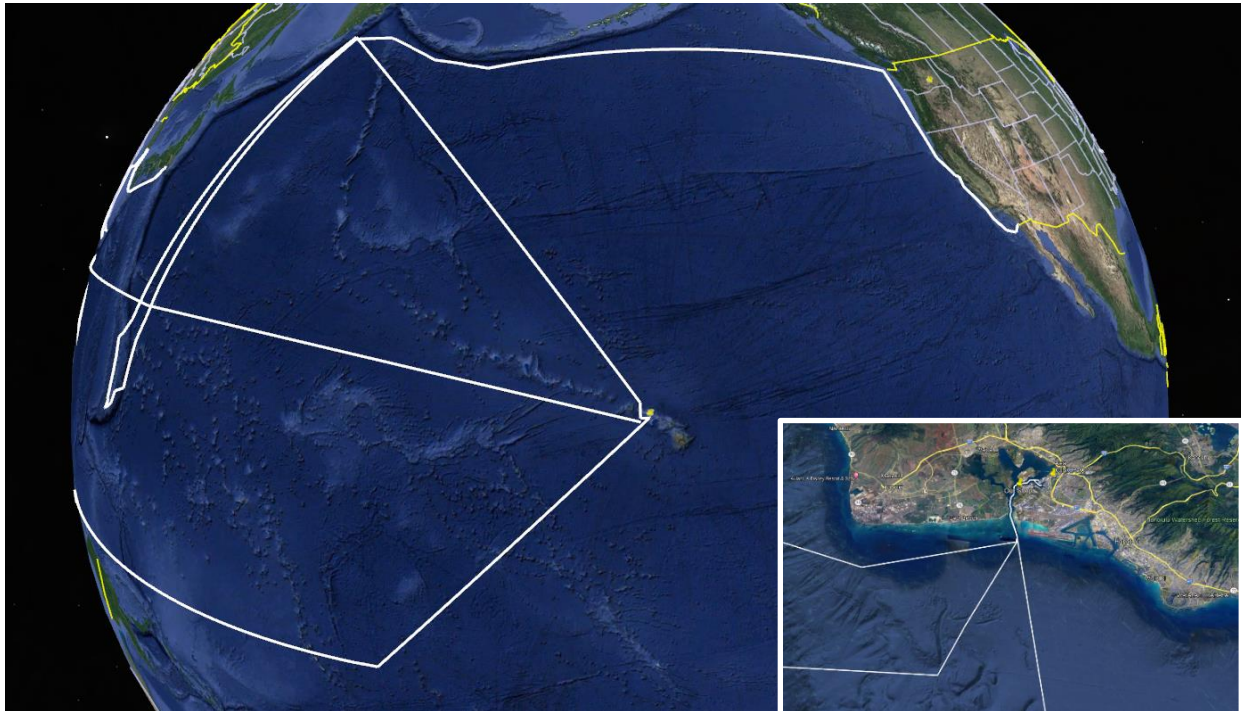
Although the count shown in this story is only 49,415. More on the justification of the title on page two. Back in the early days of COVID, I took on a challenge and posted it in the Group posts of my old shop. I don't remember who the "new acquaintance was, but it has now led to a "See Story" and not just a Facebook post. The biggest challenge for this project was working around the "classified" portions of my travels. I decided to place markers "in the area" but not necessarily the actual locations. So a person familiar with "things" might be able to extrapolate conclusions; but I promise you it didn't come from me.



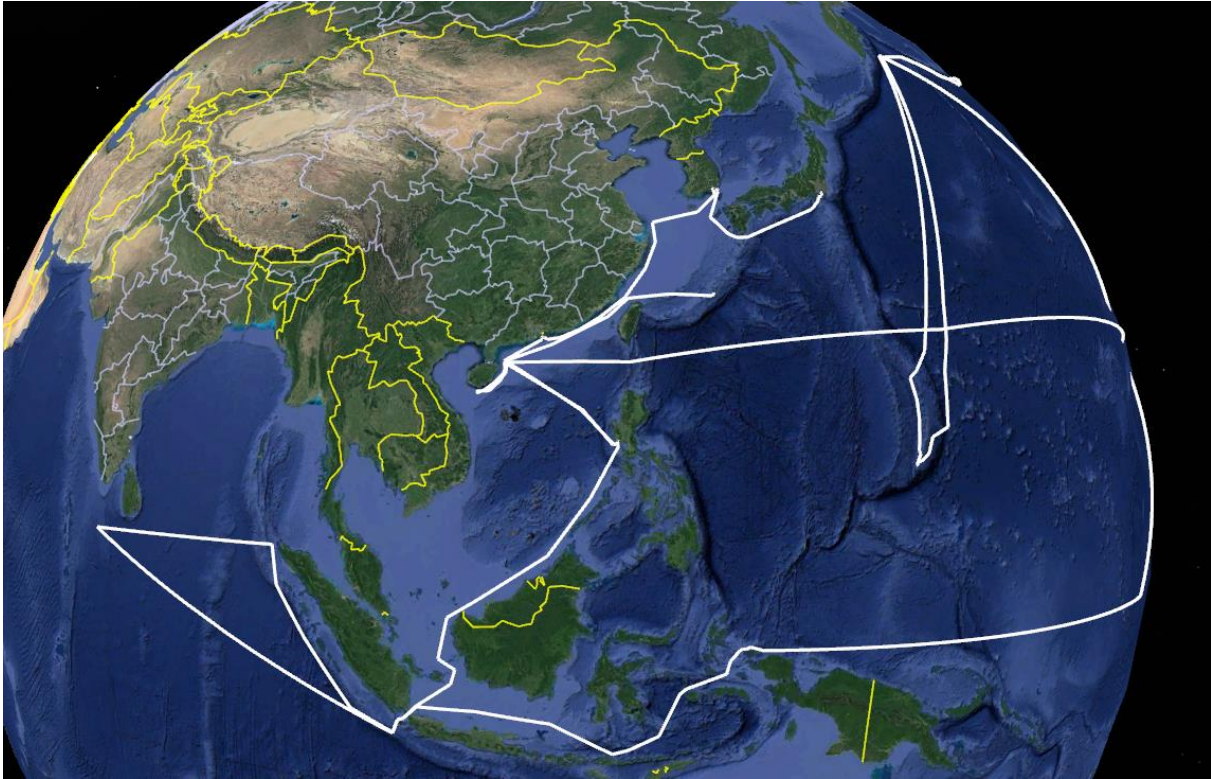
Pete Neild  
February 23, 2021 · 🌐

New COVID project. Yesterday, I was asked by a new acquaintance, "So how do you compare to Captain Nemo?" I responded "What?" He came back with "Captain Nemo did 20,000 leagues under the sea - how many did you do?" In the forty some odd years since, I have never been asked that question. Lots of others, but that one is unique. So I'm breaking out all my old TAD orders, Google Earth, and starting to work on it. Google Earth for the transits, which I will approximate, and blow through liberty ports and on-station locations. And then I will use 12knots average speed for the on-station time (~312 miles per day). How about you - wanna kill a few hours and figure yours out? Do you already know? I'll watch the comments.

The maps shown here start centered on Pearl Harbor, my first duty station where I "rode the boats". Because of the extent of the "runs", there are two pictures, one of Pearl and the Left Coast, and the other the Western Pacific, where I spent most of my time:



Again in the interest of covering my butt, I won't identify the individual boats that I was on. AND to obfuscate even more, while these maps show my "submerged time", they also show on occasion (like Pearl and San Diego) the entry and exits to those ports, be they the beginning or end of the "run".



OK so the map of the Western Pacific includes the Indian Ocean, and yes, I did go there. But again in the interest of obfuscation, the actual mission track is NOT shown, but if you were to add in the actual distance covered “on-station”, the total would exceed the 50,000 leagues – Hence the title of this SeeStory is justified – I’m only showing the 49,415 with the white lines.

Now then even though I was stationed in New London, I never departed from there. The insert of New London is strictly a point of reference for this “See Story”. All of my “runs” with the exception of a run out of Charleston S. Carolina, I flew to. And again, there were a total of 10 runs out of both Pearl and New London. Those of you who know the boats (East or West) could probably figure things out – but again NSA – It didn’t come from me. Readers can extrapolate what they wish.

